



Education

# Rutherford Public School

## Weekly Newsletter

### WEEK 10 TERM 2 2017



#### Respect

At Rutherford Public School we:

- ✓ follow instructions
- ✓ have good manners
- ✓ encourage others



#### Responsibility

At Rutherford Public School we:

- ✓ are organised
- ✓ are always safe
- ✓ own our choices
- ✓ allow others to learn and play



#### Personal Best

At Rutherford Public School we:

- ✓ always strive to do quality work
- ✓ are learners
- ✓ always strive to do our best



## School Calendar

	Day	Events
Term 2 Week 10	NAIDOC Week Celebrations & Assemblies will be held this week	
	26/6	<ul style="list-style-type: none"> <li>No payments to the school office until Monday 31st July</li> <li>Whole school NAIDOC assembly in the Quad</li> <li>12:00pm Debating vs Bolwarra PS</li> <li>1:30pm K-2 Webland Wonderland Afternoon</li> </ul>
	27/6	<ul style="list-style-type: none"> <li>K/6J Bocce Competition - Maitland High School</li> <li>9:00am PSSA Tennis vs Bolwarra at Rutherford Tennis Centre</li> <li>10:00am PSSA Boys Touch Football at Max McMahon Oval</li> </ul>
	28/6	<ul style="list-style-type: none"> <li>No Band today</li> <li>Multicultural Public Speaking Local Area Final</li> <li>MADD Showcase for Stage 3 at RTHS</li> <li>P&amp;C Pie Drive Collection from Community Room</li> </ul>
	29/6	<ul style="list-style-type: none"> <li>ATSI Excursion to Awabakal Education Centre</li> </ul>
Term 3 Week 1	30/6	<ul style="list-style-type: none"> <li>1:30pm Yr 3-6 Webland Wonderland Afternoon</li> <li>Last Day of Term 2</li> </ul>
	No Assemblies this week	
	17/7	<ul style="list-style-type: none"> <li>No payments to the school office until Monday 31st July</li> <li>Staff Development Day</li> </ul>
	18/7	<ul style="list-style-type: none"> <li>Students return to school for Term 3</li> </ul>
	19/7	<ul style="list-style-type: none"> <li></li> </ul>
Term 3 Week 2	20/7	<ul style="list-style-type: none"> <li>PSSA Girls &amp; Boys Touch Football</li> </ul>
	21/7	<ul style="list-style-type: none"> <li>Boys &amp; Girls Soccer Gala Day at Norm Chapman Oval</li> </ul>
	Assemblies will be held this week	
	24/7	<ul style="list-style-type: none"> <li>Rutherford Public School 'GO LIVE' on the new LMBR System!</li> <li>No payments to the school office until Monday 31st July</li> <li>3:15pm to 4:15pm ATSI Homework Club</li> </ul>
	25/7	<ul style="list-style-type: none"> <li>10:00am Stage 1 to 'Mr Stink'</li> </ul>
Term 3 Week 3	26/7	<ul style="list-style-type: none"> <li></li> </ul>
	28/7	<ul style="list-style-type: none"> <li></li> </ul>
	29/7	<ul style="list-style-type: none"> <li></li> </ul>
		<ul style="list-style-type: none"> <li></li> </ul>

**This week's PBL Focus:**  
**Wearing our school hats**  
**in the playground!**

*What's on and  
What's coming up?*

ALL STUDENTS	<p><b>No payments to the school office until Monday 31st July</b></p> <ul style="list-style-type: none"> <li>26/6 Whole school NAIDOC assembly in the Quad</li> <li>30/6 Last Day of Term 2</li> <li>1/7 to 16/7 School Holidays</li> <li>17/7 Staff Development Day</li> <li>18/7 Students return for Term 3</li> </ul>
ATSI	<ul style="list-style-type: none"> <li>24/7 3:15pm ATSI Homework Club</li> <li>29/6 ATSI Excursion to Awabakal Education Centre</li> </ul>
P-K Program	<ul style="list-style-type: none"> <li>9:00am Thurs - Little Dragons Morning</li> <li>12:45pm Thurs - Little Dragons Afternoon</li> </ul>
Infants	<ul style="list-style-type: none"> <li>26/6 1:30pm K-2 Webland Wonderland Afternoon</li> </ul>
Kindergarten	<ul style="list-style-type: none"> <li></li> </ul>
Stage 1 Year 1 & 2	<ul style="list-style-type: none"> <li>25/7 10:00am Stage 1 to 'Mr Stink'</li> </ul>
Primary	<ul style="list-style-type: none"> <li>28/6 Multicultural Public Speaking Local Area Final</li> <li>30/6 1:30pm Yr 3-6 Webland Wonderland Afternoon</li> </ul>
Stage 2 Year 3 & 4	<ul style="list-style-type: none"> <li></li> </ul>
Stage 3 Year 5 & 6	<ul style="list-style-type: none"> <li>27/6 Stage 3 Transition Soccer Gala Day</li> </ul>
Band	<ul style="list-style-type: none"> <li>28/6 No Band lessons or practice today</li> </ul>
P&C	<ul style="list-style-type: none"> <li>28/6 P&amp;C Pie Drive Collection from Community Room</li> </ul>

**SCHOOL HOLIDAYS**  
**Monday 3rd July to Friday 14th July**

**Students return to school for Term 3 on:**  
**Tuesday 18th July 2017**

*...Together We Strive...*

## LMBR Transition

In readiness for our migration to the new LMBR school systems, we have now closed all payments to the school from families.

Over the coming few weeks, we will be working to get our computer system ready for this huge change. The current system we use is almost 30 years old! We are definitely looking forward to the update!

We ask that during the coming weeks, you are patient with us as we navigate our way through the new processes and challenges that LMBR will bring with it. As you can imagine, going from a DOS-based, keyboard only, finance only program, to an App-based, complete finance and student management package is quite daunting, and involved.

You may see some 'L-plates' popping up in the office. This should serve as a visual reminder that we are doing our best, but will be in a learning phase for a little while to come.

No payments, whether cash, EFTPOS, cheque or Parent Online Payments (POP), will be accepted at school until Monday 31<sup>st</sup> July 2017. Two weeks of this payment blackout period will, thankfully, be in the school holidays, so we hope it doesn't inconvenience families too much.

Thank you for your understanding and support on our LMBR journey. We look forward to hitting the ground running on Monday 24th July, and being able to introduce you to some of the benefits of the system as we move forward.

## School Upgrade Announced

Most parents would have heard about the exciting news that Rutherford Public School will benefit from a major upgrade to facilities, as announced in the State Government's budget last week. Our school will receive new buildings and landscaping to bring our facilities up to an amazing standard for our learning community.

The funding announcement should bring quick developments, and the building program should commence sometime in 2018. The school, with the P&C, have been working with the Department to discuss designs and school needs. Any plans will require extensive consultation with our parents and community. Although some short term logistical problems will need to be worked through (e.g. builders, machinery, contractors etc), Rutherford Public school will be an amazing place for students to learn and grow.... Watch this space!

## Semester 1 Reports

School reports will go home this week to all parents and carers. The Semester 1 reports aim to give parents more information

about how their child is progressing against the NSW syllabus standards. Please take the time to read and discuss the report with your child. Class teachers are available for interviews at any time throughout the year to clarify any concerns or questions. Please contact the school office to make an appointment with your class teacher.

## Duplicate School Reports - Non Residential Parents

The school is happy to provide duplicate reports for parents who may require additional copies. Due to the number of reports we normally mail out to non-residential parents that are returned to the school as 'undeliverable', no reports will be mailed until they are requested.

**Families are asked to contact the school to request a second report if required.** Please note that the school MUST comply with any current court orders restricting or allowing information to particular person/s. The office will send home copies of the reports by mail, or they can be collected from the front office.

## Trauma Informed School Practices

Last week, as part of school professional development, the staff looked at the impact upon students exposed to trauma in their early development. It is a fact that many Australian children are exposed to traumatic events. Grief, loss, parent mental health or substance abuse, physical and sexual abuse, and domestic violence occur more often in children's lives than it should. One in four children are affected by these issues. Every classroom, every school, every town in Australia is impacted.

Recent studies suggest that as many as 13 out of every 30 students in an average classroom will have toxic stress from three or more traumatic experiences.

Compared with children with no adverse childhood experiences, these children are:

- **3 times more likely to fail;**
- **5 times more likely to have severe attendance problems;**
- **6 times more likely to have severe behaviour problems;**
- **4 times more likely to have self-reports of poor health.**

In the short term, children experiencing toxic stress from difficult pasts or presents (or both) often present with learning issues, social issues, and behavioural issues. Schools are challenged by such behaviour, and hardworking staff need to learn ways to meet the needs of these children.

In the longer term, toxic stress from childhood trauma has been strongly linked to many of our biggest health and social problems, including substance abuse, jail, chronic disease, and

early death. Unaddressed, childhood trauma can be devastating.

Rutherford Public School hopes to build its knowledge of the impact of trauma and develop school-wide policies and systems to help students learn how to build confidence and resilience.

Our school will continue to develop our knowledge and understanding of effective trauma informed management.

### Homework Club

We are setting up a Homework Club for our Aboriginal and Torres Strait Islander students. Homework Club will start next Term and will run every Monday afternoon from 3:15pm until 4:15pm. Students will be provided with assistance from Miss Johnston and Mr O'Sullivan, access to technology to complete their homework, and afternoon tea.

Notes went home last week to register your interest, please see Miss Johnston if you need a spare note.

**Sara Johnston- Aboriginal Education Leader**

### Public Speaking Results

Congratulations to our Public Speaking Finalists who presented speeches during Week 9 as part of our Public Speaking Program. After four Stage Finals, the following students were announced as our 2017 Champions:

#### Early Stage 1

- 1- Mary-Jane Blake
- 2- Ava Jenner
- 3- Chloe McGovern

#### Stage 1

- 1- Sierra Smith
- 2- Amber Brodie
- 3- Logan Kavanagh

#### Stage 2

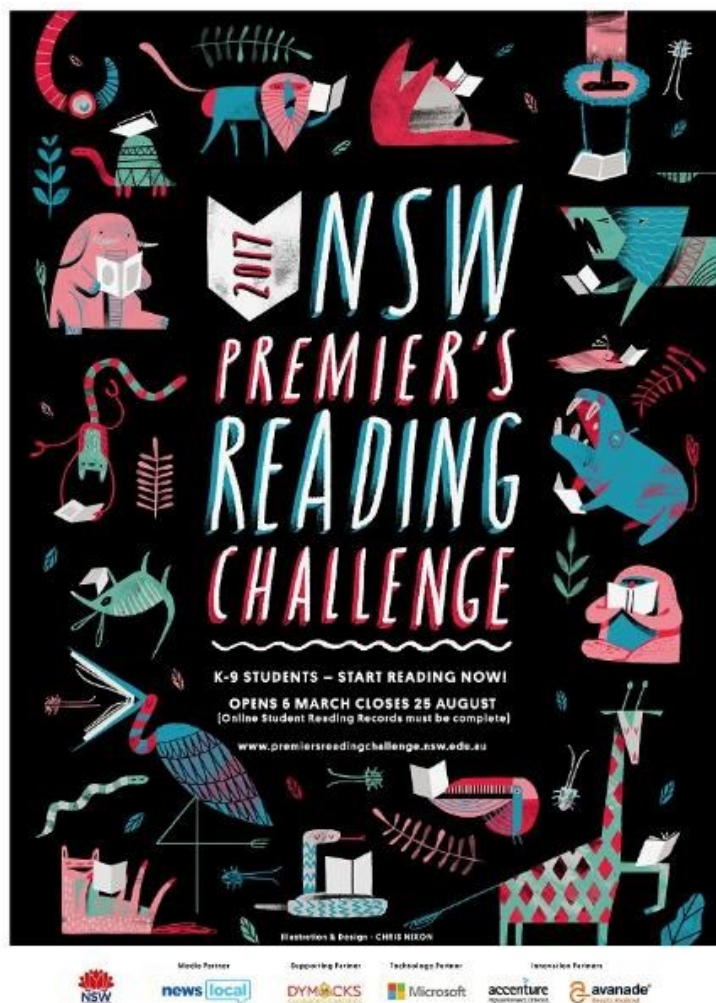
- 1- Josie Dick
- 2- Riccardo McCudden
- 3- Grace Rutherford

#### Stage 3

- 1- Ava Jankovic
- 2- Emily Fenwick
- 3- Zeke Zielinski

A big thank you to Mr John Quinn and Ms Cheree O'Neill who adjudicated the finals and gave some expert feedback on how the students may improve even further. The first and second placegetters will now go on to represent Rutherford Public School in the Zone Finals in Term 3.

### Premier's Reading Challenge



Congratulations to the following students and classes who have completed the Premier's Reading Challenge (PRC) already. Students were awarded a certificate and badge last week. The official PRC certificate will be presented at the end of the year. Well done to the following students for reading their 20 books!

**Jasmine Antoni 4C**

**Kiara Bishop 4C**

**Svenja Coetsee 4C**

**Rajan Gandhi 3/4B**

**Zalliah Jackson 4D**

**Noah Lee 5/6L**

**Grace Rutherford 4C**

Super congratulations to Class KC, 1S and 2G, who have also finished their Challenge.

With the Winter holidays coming up, there is no better time to catch up on your reading and finish the Challenge. Extra books can be borrowed over the holidays if necessary.

Keep reading everyone!

**Kim Beesley, Teacher Librarian**



## Webland Wonderland Afternoons

This week the students who have not received a behaviour form over the last five weeks of Term 2 will be invited to be part of the Webland Fun afternoons.

### Years K to 2

Monday 26th June 1:45pm to 2:45pm

### Years 3 to 6

Friday 30th June 1:45pm to 2:45pm

Rutherford Public School has high expectations of its students and aims to encourage students to make positive choices over a period of time. Students can choose from a range of activities to enjoy. Students who are not eligible to attend will be fully supervised in classrooms.

Congratulations to the students who consistently show our core values of Respect, Responsibility and Personal Best. All activities are FREE!

## Beanie for Brain Cancer

Thank you to the families who supported our "Beanies for Brain Cancer" day last Monday. We had some weird and wacky beanies, as well as some practical warm ones as the winter chill arrives this month. We collected over \$350 for the charity and hope this helps in some small way to find a cure for this terrible disease.

## Mr Taylor

This week Mr Taylor (Class 5/6T) will leave Rutherford Public School on Friday to take up the position as Relieving Assistant Principal of Kahibah Public School for the remainder of the year. We hope to see Mr Taylor back at Rutherford Public school in 2018. All the best Mr Taylor in your new position with the Department of Education.



## TERM 3 Dates

Term 3 is shaping up to be just as busy as the first two! Some important dates for your calendar include:

18/7/17	Term 3 commences for all grades
31/7/17	Education Week
4/8/17	Education Open Day
7/8/17	School Disco
15/8/17	Fundraiser for Ava Jankovic
30/8/17	School Photos
31/8/17	Visiting Author - Michael Salmon



## Grounds

Have you noticed our grounds and gardens looking healthier? Thanks to some hard working staff and students, our school gardens are starting to show some improvement (and love)! We have moved the garden areas to two new locations and started to improve some of our existing flower beds. Mrs Riches (our new general assistant) has also been working hard to get weeding and pruning done ready for Spring. Thank you to everyone involved in making our school look amazing!

## MADD Showcase - Stage 3

Stage 3 are asked to please ensure you have returned your MADD permission note as soon as possible, or you will be unable to attend!

## High Flyers Spelling Club

Calling all High Flyers! Are you ready for a challenge? Do you want to achieve your personal best?

Join Ms Morton in 2J every Wednesday and Friday at afternoon tea to improve your spelling skills. Come and challenge your friends to the ultimate showdown while preparing for the Premier's Spelling Bee in the most supreme spelling bee club ever at Rutherford Public School: The High Flyers.

## Eat It to Beat It

Have you booked a spot for the FREE Fruit and Vege workshop to be held this week? Run by the Cancer Council, the workshop aims to give families ideas of how to include health and nutritious meals for school and home. Morning tea will be provided.

Please leave your name at the school office to reserve your place at the workshop.



**Come to our FREE Fruit & Veg Sense Workshop**

**Date:** Thursday 29<sup>th</sup> June 2017  
**Time:** 9.15am to 10.45am  
**Venue:** Rutherford Public School

Did you know that eating enough fruit and vegetables all their lives can help protect children against diseases, including some forms of cancer? This **free workshop** run by Cancer Council NSW will show you how you can easily:

- Save time and money making healthy meals
- Learn clever ways to entice fussy eaters
- Get a free recipe book simply by attending

Don't miss out – registration is essential. To book your place please register no later than 26/06/2017 by:  
Calling or visiting the school front office or register online at [www.cancercouncil.org.au/eatittobeatit/register](http://www.cancercouncil.org.au/eatittobeatit/register)



## Multicultural Public Speaking Finals

Rutherford Public School will host the Zone Finals of the Premier's Multicultural Public Speaking Finals on Wednesday 28<sup>th</sup> June 2017.

Students from local public schools will go head-to-head in the prepared and impromptu speeches. Parents are most welcome to come along and hear some very talented speakers.

Times will be advised once they have been confirmed.

## 2018 Kindergarten Transition Program

Have you heard about our innovative transition to school program?

Children in our school zoning area, enrolling into Kindergarten in 2018, are eligible to come along to our "P-K Little Dragons" program every Thursday for a two-hour school readiness program. The program is run by the school and fully staffed by teachers and support staff. Children learn school routines and get to know some of the children that they will enrol with in the new year.

Cost each week is only \$1. Parents can enrol their child by registering at the front office (in person). The program runs for all of Term 2 and 3 and the first five weeks of Term 4.



**Left:** Little Dragons last week were scientists who conducted an experiment to see if an object would sink or float. They practised catching and throwing, worked on fine motor skills and read the hilarious story 'Who sank the boat?' by Pamela Allen.

## Band News - End of Term 2

There will be no band practice or lessons this week. We are looking forward to a great Term 3.

## Interested in joining our School Band?

Band recruitment notes have been handed out to any students who are interested in joining our band for Terms 3 and 4, 2017.

There are places still available, so if your primary student is interested (Years 3, 4, 5, 6), please see Miss Ward 5/6W or Mr Ward on Wednesday for a note.

**Kirsty Ward, Band Director**

# Winter Wonderland

*in the Plaza*

**Wednesday 12 July 10am-4pm**

This school holidays bring the kids down to Maitland Riverside Plaza for a fun filled day of FREE activities to relaunch the centre & celebrate the opening of Aldi.

Check out our Facebook page for more details.

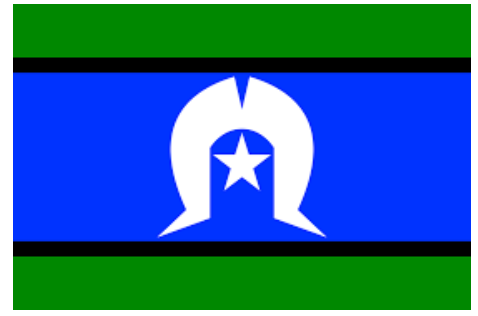
SNOW ANGELS IN THE SNOW ZONE

VR SNOW EXPERIENCE

PHOTO WITH ANNA, ELSA & OLAF

## Events:

<b>Fortnightly Assemblies:</b>			
Stage 1	2:30 pm	Monday	School Hall
Stage 3	2:30 pm	Tuesday	School Hall
Stage 2	2:30 pm	Wednesday	School Hall
Kindergarten	2:30 pm	Thursday	School Hall
Even weeks only (Week 2, 4, 6, 8, 10)			
<b>Second Hand Uniform Stall</b>			
Every Monday 2:30pm to 3:00pm			
P&C Shed behind the hall			
<b>School Band</b>			
Every Wednesday 8:30am			
Community Room			
<b>P-K Program for Kindergarten 2018</b>			
Every Thursday 9:00am and 12:45pm			
REGISTRATIONS NOW OPEN FOR TERM 3 WEEK 1 INTAKE!			



## **Our Languages Matter**

---

### **2-9 JULY 2017**

#### **NAIDOC Week**

Rutherford Public School will be celebrating NAIDOC Week next week.

NAIDOC Week celebrations are held across Australia each July to celebrate the history, culture and achievements of Aboriginal and Torres Strait Islander peoples.

NAIDOC is celebrated not only in Indigenous

communities, but by Australians from all walks of life. The week is a great opportunity to participate in a range of activities and to

support your local Aboriginal and Torres Strait Islander community.

Culture bands will be on sale all week for all students.

#### **Our NAIDOC celebrations include:**

##### **Monday 26th June 2017**

**9:30am** Whole-school assembly in the quad. We will be having a Smoking Ceremony, Didgeridoo performance, student speeches and kindergarten are performing a song. All parents, whether Aboriginal or not, are invited to attend!

**10:15am** Morning tea for parents/carers of Aboriginal and Torres Strait Islander students in the Community Room.

##### **Thursday 29th June 2017**

**8:00am** K-6 Excursion for Aboriginal and Torres Strait Islander students to Awabakal Environmental Education Centre. Payments are now closed for this excursion.





## MARCH

Celebration of Existence  
Monday 3rd July 2017  
Maitland Court House 9am



Join us in celebration, as we walk from  
Maitland Court House to Maitland Town  
Hall.

Official proceedings include flag raising,  
speeches, and traditional dance followed by  
morning tea at Maitland Town Hall.



Everyone is welcome.



## WaNay Disco

When: Thursday 13th July 2017  
Venue: Mindaribba Hall, 1A  
Chelmsford Drive, Metford  
Time: 6pm - 9pm

Dancing competition &  
lucky door prizes

Music - Dancing - Competitions - Fun - Dinner




**MINDARIBBA NAIDOC  
FAMILY FUN DAY 2017**

Date: Wednesday 12th July 2017  
Venue: Metford Recreational Reserve,  
77 Schanck Drive, Metford  
Time: 10:30am - 2:30pm

TRADITIONAL GAMES	BUSH TUCKER TASTING
ART & CRAFTS	FACE PAINTING
STALL HOLDERS	LUNCH
RIDES	STORYTELLING
INTERACTIVE ACTIVITIES	COMMUNITY MARKETS
JUMPING CASTLE	ENTERTAINMENT






**NAIDOC Family Fun Day**

4th July 2017  
10am till 2pm  
Rotary Park, Kurri Kurri

**LIVE ENTERTAINMENT**

**FREE Morning Tea**  
**FREE Community Info and Family Activities**

**Bushtucker Sausage Sizzle**

Call Barkuma for more info  
**49371094**



**Barkuma**  
ABILITY LINKS  
NSW  
EARLY LINKS

**Our Languages Matter**  
2-9 JULY 2017

NAIDOC celebrations are held around Australia each July to celebrate the history, culture and achievements of Aboriginal and Torres Strait Islander peoples.



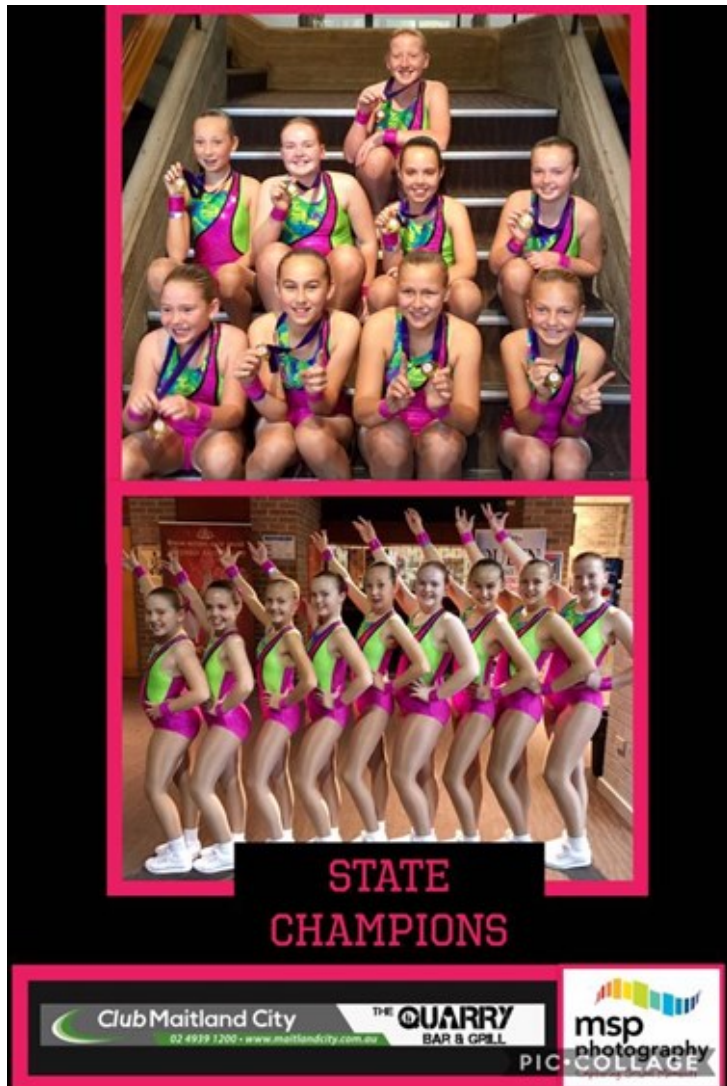


## Congratulations Pink Jets! State Champions!

The Pink Jets legend lives on this year as the 2017 team swept all other teams aside to win their division in the School Aerobics competition last weekend in Sutherland. The team will now compete at the National Championships at the Gold Coast in August, under the careful guidance of super coach Ms Ledwos.

This win is a great reward for the many hours of training and dedication the team has shown throughout the year.

Good luck to the Pink Jets in August!



### PSSA Tennis

Rutherford Public School will play Bolwarra Public School on Tuesday 27th June at Rutherford Tennis Centre. Students are asked to be at school by 8:25am to walk to the venue for a 9:00am start. Please wear your sports shorts and white school polo shirt (no coloured sport shirts please), and bring \$5 for venue hire fees.

### Hunter Netball Trials

Laura Vallance and Reese O'Donnell represented Rutherford Public School and the Maitland Zone at the PSSA Hunter Netball trials last week. Both girls played extremely well and showed great sportsmanship. The girls should be very proud of themselves as they were some of the top netball players in the entire Maitland area.



Congratulations to two of their teammates who were chosen for the Possible vs Probables game next term. Thanks to Mrs Leanne Taylor for coaching the girls.

### Basketball Courts

Watch out for our new backboards for our basketball courts. Mr Cochrane has been making some new boards with each house logo. Check out the first completed one!





## P&C Meeting

Our next meeting will be held on Tuesday 18<sup>th</sup> July in the Community Room at 6:30pm.

## P&C Vacancies

At our next meeting (18/17/2017), we are looking to fill two vacancies due to resignations from two of our P&C Executive at our last meeting.

**Vice President** (1 position) The Vice Presidents are responsible for supporting the work and actions of the President; acting as 'President' in the event of the President's absence; being a signatory on the association's bank accounts.

**Treasurer** (1 position) The Treasurer is responsible for all funds held in the name of the P&C (including canteen, uniform shop); receiving and depositing monies; maintaining financial records; drawing cheques and presenting accounts; reports income and expenditure statements together with a reconciled bank statement at each P&C meeting; ensuring a cash book or books are kept; recording all financial transactions; being a signatory on the association's bank accounts.

Any members of the P&C can nominate for the vacant positions by seeing Mr Brown for a nomination form before the next meeting, or by nominating themselves or someone else at the meeting on 18/07/17. Executive positions must be filled by financial members of the P&C.

## 5 Tips to help get ready for school in the morning!

Getting your child ready for school in the morning can be stressful – school lunches, forgotten permission slips, packing schoolbags – but it doesn't have to be. Here are 5 tips to help you and your child get a great start to the day!

### 1 Early to bed, ready to rise

When your child gets enough sleep, they are more likely to wake up cheerful, energetic and ready to learn at school. If you have to drag your child out of bed in the morning, they might not be getting enough sleep. Check out the Raising Children Network's great information about sleep for children.

### 2 Helping hands

Encourage your child to get themselves ready as much as possible. Instead of doing everything yourself, teach your child to do tasks like brushing their teeth and hair, packing their bag and making their bed. They may not be as fast or as good as you at the beginning, but keep encouraging their independence

and responsibility – it will free up time for you to do other things!

### 3 Be prepared

Take the pressure out of the morning routine by getting prepared the night before. Anything that doesn't need to be done in the morning can be done the night before – for example, making lunches, packing bags and reading/signing notes. Remember to encourage your kids to do some of these tasks independently too, such as packing their schoolbag and getting their clothes and shoes ready before they go to bed.

### 4 Keep it simple

Try to keep your morning routine as simple as possible on school days. Save non-essential tasks and chores for evenings and weekends when you have more time – folding the laundry and mopping the floor can wait! Try to keep breakfast simple too – quick nutritious options like wholegrain cereals, fruit and yoghurt are great. If the breakfast things are in easy reach, you can encourage your kids to make their own breakfast (and even clean up afterwards!).

### 5 Make a plan

Some families find it helpful to develop a morning schedule that puts all these ideas together. It often works well if you involve your children in making the schedule – making a list of the morning tasks, who needs to do what, and what time things need to be done.

Turning your schedule into a chart can help keep your child focused on the things they need to do and encourage them to feel responsible for getting to school on time. You can make your own chart together, or download one from the internet. Once your child gets into the swing of things, you should find you'll need to remind less, and praise a lot more – a much more pleasant start to the school day!

This article is reproduced from Learning Potential, a product of the Australian Government Department of Education and Training.

For more great articles click the link below and download the app.



## FROM THE OFFICE

### SCHOOL FEES

All students have been invoiced for our 2017 school fees. The fee covers some of the costs associated with exercise books, copying costs and online Matific subscriptions.

2017 fees are:

\$45 per student or \$90 per family.

Thank you for paying your fees promptly and contributing to our school operations.

### OFFICE HOURS:

8:30am - 3:30pm Monday to Friday

### VISITING PARENTS:

Reminder to parents to report to the office when visiting the school.

### PAYMENTS: NO PAYMENTS FROM 23/6 TO 31/7 PLEASE

PARENTS ONLINE PAYMENTS (POP) - POP can be made to the school for amounts owing for students, via a secure

payment page hosted by Westpac.

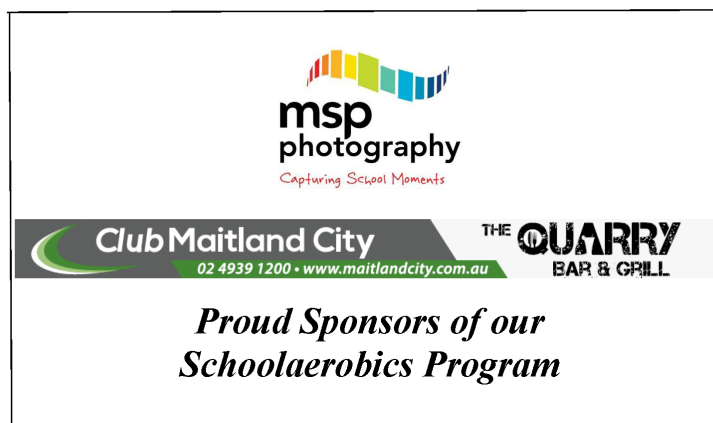
Payments can be made using either a Visa or MasterCard credit or debit card.

The payment page is accessed from the front page of the schools website by selecting \$ Make a payment.

Minimum payment is \$10, and you can only pay for one child on each transaction.

### EFTPOS:

EFTPOS operational times are 8:00am until 12:00pm.



# DO NOT POP!

COMING SOON

## Learning Management Business Reform

Our school will transition to LMBR, a new software management program, in July. During this time, parents are asked to stop using our online payment system during the transition period, which will be:

## Friday 23<sup>rd</sup> June to Monday 31<sup>st</sup> July 2017

We will also be unable to accept cash, cheques and EFTPOS payments during this period.

Our current bank account will be closed, therefore any payments made through POP during this time, will not show up on our system. Please ensure you do not pay by POP during the above mentioned dates.



## POSITIVE BEHAVIOUR FOR LEARNING

### Respect

At Rutherford Public School we:

- follow instructions
- have good manners
- encourage others



### Responsibility

At Rutherford Public School we:

- are organised
- are always safe
- own our choices
- allow others to learn and play



### Personal Best

At Rutherford Public School we:

- always strive to do quality work
- are learners
- always strive to do our best



I can control what I do and say.



I can follow instructions.



I can listen.



I can raise my hand and wait.



I can work quietly.



## Want to help your child with their learning?

<https://www.learningpotential.gov.au/>

If you're looking for tips and ideas to help you nurture your child's potential, you've come to the right place. Learning Potential has hundreds of articles on all aspects of your child's learning and development, from the early years to the end of high school, with more articles added all the time!

Browse by categories, or enter a topic in the search box. All the content is also available on the free Learning Potential app - download it on the [App Store](#) or [Google Play](#).

If your child is in primary school, the complementary [Learning Potential Resources](#) website has great ways you can reinforce the skills your child is developing in the classroom.



Place lunch orders from your phone, tablet or home PC!

For help call  
1300 361 769

**flexischools**

## ONLINE ORDERING



- Available 24/7
- Convenient for parents
- Removes paper orders and cash
- **FREE** registration

Online ordering is more convenient, providing a 24/7 payment and ordering system that can be accessed from home, work or a mobile device.

No more fumbling around for coins in the morning or sending kids to school with excess cash, online orders are faster and more accurate giving parents peace of mind that their order and payment is received accurately at the school.

Registration is free and only takes a few minutes.

## EASY, ONLINE REGISTRATION

- Go to [www.flexischools.com.au](http://www.flexischools.com.au)
- Click REGISTER
- Enter your email
- You will be emailed a link to an online form - follow the link
- Choose a username and password and complete the form
- Add each student and their class
- Top-up the account - VISA or Mastercard preferred.

[Click here for the canteen menu:](#)

**CLICK HERE**

### Dragon's Nest Breakfast Club

We are looking for parent Volunteers to run our breakfast club from 8:30am to 9:30am (Mon-Fri). If you are interested and able to help out, please contact Mrs Rasna Gandhi (CLO) in the office. We would like to say a big thank you to Mrs Saxby, Mrs Swetnam, Ms Parkinson, Mrs Vassallo, Mrs Tansley and the Singh family for their donations to the breakfast club.

Please support our Breakfast Club Sponsors:

Ashneel Singh  
Building Designer  
Mobile: 0413 206 682  
Email: ashneel\_b\_singh@yahoo.com



*Bakers Delight*  
We're for real.

### PBL Team Expression of Interest

The Positive Behaviour for Learning (PBL) Team are looking for members of the Rutherford Public School community to join us!

We would love to have a community member available to attend meetings, which are usually held on Mondays from 3:30pm to 4:30pm, several times per term, to provide us with valuable feedback.

If you think this is something you are interested in, please fill in the slip below and drop it to the office by Friday 23rd June 2017.

Thank you from The PBL Team



-----  
**YES! I am interested in joining the PBL Team.**

Parent/Carer Name \_\_\_\_\_

Contact number \_\_\_\_\_

Child/ren at Rutherford \_\_\_\_\_  
\_\_\_\_\_





## School Holiday Clinics

### Inzane Football — Clayton Zane

Looking to take your skills to the next level?

Are you a beginner or Elite Junior?

Monday 10th — Friday 14th July 2017

9am-3pm

Suited for 5-14 years

Register online at [Inzanefootball.com](http://Inzanefootball.com)

or call

Maitland Indoor Sports Centre

37 Hinkler Ave Rutherford NSW Ph (02) 49 326799

[maitland\\_indoor\\_sports@hotmail.com](mailto:maitland_indoor_sports@hotmail.com)



## SCHOOL HOLIDAY NETBALL DEVELOPMENT CLINIC

~ Registrations **NOW OPEN** ~

*Are you a passionate Junior netballer who would like to build confidence, develop teamwork and further enhance your skills?*

*Pivot Netball Academy can assist you.*

**OUR PROGRAMS INCLUDE:**

**2 DAY SKILL CLINICS  
FOR 7-12 YEAR OLDS**

**SPECIALIST CLINICS  
FOR 11-15 YEAR OLDS**

**AFTER SCHOOL  
DEVELOPMENT PROGRAM**

~ **REGISTRATIONS NOW OPEN** ~

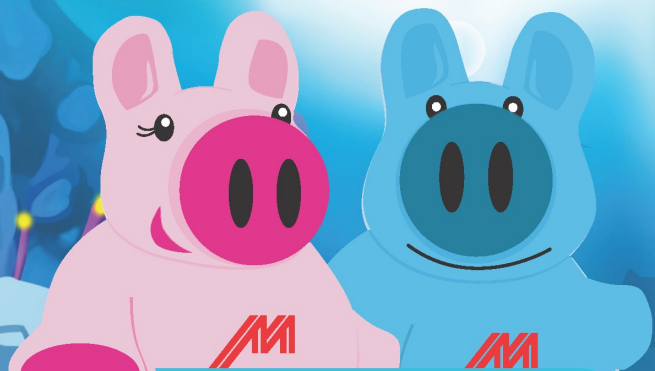
*For children turning the ages above this year*



For further info contact email: [jula@pivotnetball.com.au](mailto:jula@pivotnetball.com.au)  
[www.pivotnetball.com.au](http://www.pivotnetball.com.au)

Proudly endorsed by:  
HUNTER ACADEMY OF SPORT • HUNTER SPORTS HIGH

## BANK@school



### Bank@school 2017

Bank@school is a financial literacy program that encourages students to learn about the importance of saving.

A representative from The Mutual visits Rutherford Public School each Thursday of the school year and collects the school banking from the bank deposit box located at the school office. The deposit is taken to the nearest branch of The Mutual for processing.

Your child will receive a 2017 Mighty Mutual activity booklet which is packed

with puzzles, games and information. A deposit/ receipt booklet will also be given to students participating in the Bank@school program as receipt of the deposit.

To open a Mighty Mutual Account for your child please visit your nearest branch of The Mutual - Rutherford Marketplace.

**If you would like more information regarding Bank@school please call The Mutual on 1300 688 825.**



ABN 94 087 651 993 AFSL 238139



## The simplest way

...to stay shaded.

### Did you know?

Almost all skin cancers are caused by over exposure to ultraviolet (UV) radiation from the sun. To protect your skin, seek shade when UV levels are 3 or above. Good quality shade can reduce UV exposure by up to 75%.



### Seeking shade

Shade is one of the best and easiest ways to protect against UV radiation. In many situations, combining built (pergolas, sails and awnings) and natural (dense trees and shrubs) shade is the best option. You can always set up portable shade if it is not available.

### Promote the use of shade

Plan your outdoor activities in shaded areas and follow the shade as it moves throughout the day.

### For total UV Protection:

- Slip on clothing which covers as much skin as possible.
- Slop on 30+ broad-spectrum, water-resistant sunscreen.
- Slap on a broad brimmed, legionnaires or bucket hat.
- Slide on some wrap-around sunglasses.
- Seek shade when outdoors.

For more information on shade visit: <https://www.cancercouncil.com.au/cancer-prevention/sun-protection/>

To help keep your kids safe in the sun, check your schools SunSmart status by heading to [www.sunsmartnsw.com.au](http://www.sunsmartnsw.com.au)





# MAITLAND RELAY FOR LIFE

## MARCELLIN PARK

### SATURDAY 9TH SEPTEMBER 10AM - 10PM

## ARE YOU A PERFORMER?

**RELAY FOR LIFE**  
Cancer Council

We are looking for performers for Maitland Relay For Life On Saturday 9th September

**KEEN?**

For more info email [clint.ekert@nswcc.org.au](mailto:clint.ekert@nswcc.org.au) or call 6572 5405



## SuperStrike

Rutherford Superstrike

**SATURDAY 24TH JUNE 6.30PM**

**\$25 PER PERSON INCLUDES:**

- 2 GAMES OF BOWLING
- SHOE HIRE
- FINGER FOOD

**For Relay!**

Grab a Team of 6, or come alone all are welcome!

**Teams of 6 or come alone**

**Only \$25 Per Person!**

**Prizes for Winning Team**

**Prizes for Best Dressed!**

**ALL PROCEEDS GO TO MAITLAND RELAY FOR LIFE**

**RELAY FOR LIFE**  
Cancer Council

**TO BOOK HEAD TO**  
[www.trybooking.com/284109](http://www.trybooking.com/284109)

**trybooking**

TryBooking proudly supports charities by donating back all booking fees



## CHRISTMAS IN JULY BALL

**FOR MAITLAND RELAY FOR LIFE**

PUT ON YOUR DANCING SHOES AND DRESS TO IMPRESS WHILE RAISING MUCH NEEDED FUNDS FOR THE CANCER COUNCIL NSW AND MAITLAND RELAY FOR LIFE.

TICKETS AVAILABLE NOW FROM READING CINEMAS MAITLAND

**1ST JULY 2017**  
**MAITLAND TOWN HALL**  
**6.30PM ARRIVAL FOR 7PM START**

**TICKETS: \$100 AVAILABLE NOW AT MAITLAND READING CINEMAS 4934 2240**

**INCLUDES: CHAMPAGNE AND CANAPES ON ARRIVAL. CHRISTMAS BANQUET BUFFET AND FESTIVE DESSERTS**

